

# Science and Pseudoscience

The class are all beaming with fascination and excitement. Many of them had conversations last night at home that made their parents wish they could study Psychology too.

A great programme that managed to be both thought-provoking and educational at the same time.

*This conference aims to educate, entertain and enthuse your students, facilitating their understanding of science and increasing their motivation for studying Psychology!*

**Time** 11.00 am – 4.30 pm

**Cost** £20 (inc VAT) per student plus 1 free teacher place for every 10 students.

## Dates and venues

Monday 8 November – Edinburgh Assembly Rooms

Tuesday 9 November – Bristol, Colston Hall

Wednesday 10 November – Nottingham Playhouse

Friday 26 November – London, Friends Meeting House

## Speakers

- ❖ **Psychologist Professor Richard Wiseman** started his working life as a professional magician and currently holds Britain's only Professorship in the Public Understanding of Psychology at the University of Hertfordshire. He frequently appears on the media, and has written over 60 academic articles and several books, including *The Luck Factor* and current best seller *59 seconds*.
- ❖ **Andrew Newton** is one of the most successful and experienced hypnotists in the world. He has over 5,500 public and television appearances under his belt and has hypnotised more than 55,000 people over 30 years. Andrew originally taught Paul McKenna and inspired a host of others. His dynamic approach has earned him the reputation of being one of the world's foremost experts in hypnosis.
- ❖ **Phil Banyard** Senior Lecturer at Nottingham Trent University, former Chief examiner for OCR.
- ❖ **Mike Cardwell** Senior Lecturer at Bath Spa University, and former Chief examiner for AQA A.
- ❖ **Cara Flanagan** Widely published author of A level Psychology books, experienced senior examiner and conference speaker.

## To book places

 Send the following details by email or post

- Date of conference
- Your name, school's name and full postal address, and contact telephone number.
- Number of tickets required (students plus free teacher tickets)
- If required, a purchase order no.. I will provide an invoice to print out for payment.

Email to [cara.flanagan@bopenworld.com](mailto:cara.flanagan@bopenworld.com)

Or post to Southwest Conferences, East Gilgo, Migdale, Bonar Bridge, Sutherland IV24 3AR

Note that no deposits will be taken. **Payment in full required by October 15<sup>th</sup>**

If you have any queries please ring Cara Flanagan 01863 766242 / 07710 534418.

## Programme for the day

### 11.0 Introduction

#### 11.15 Phil Banyard ... Science and Pseudoscience – won't get fooled again

*Every day we are bombarded with information from all sides. But how can we tell the good stuff from the rubbish? Can we boost our brain strength by eating indescribable fish bits? Or is there any evidence at all that 5 portions of fruit and veg a day do us any good? Or against all the odds does Derek Acorah really speak to dead people? The talk will look at these and many other important issues. [Disclaimer: no ectoplasm will be harmed during this talk]*

#### 11.45 Richard Wiseman ... The Luck Factor

*Why do some people lead happy successful lives whilst others face repeated failure and sadness? Why are some people always in the right place at the right time, while others are always unlucky? For many years psychologist Professor Richard Wiseman has worked with some of the world's luckiest and unluckiest people to answer these fascinating questions. Discover the results of his work and find out how 'The Luck Factor' can change your life.*

#### 12.30 Cara Flanagan ... In defence of lab experiments

*Seeking to answer such questions as 'What is the best Psychology experiment ever?', 'Are lab experiments rubbish?' and 'Why did Galileo drop a canon ball from the Tower of Pisa?'*

#### 2.0 Richard Wiseman ... The Psychology of Magic and Illusion

*Magicians appear to make solid objects vanish into thin air, defy the laws of gravity and predict the future. Magician and psychologist Professor Richard Wiseman invites you to step backstage and discover the secret science of sorcery. Learn the hitherto hidden psychology employed by some of the world's greatest illusionists, discover why the hand is rarely quicker than the eye.*

#### 2.30 Mike Cardwell ... The 'science' of attraction

*Mike looks at some of the weird and (occasionally) wonderful insights into why human beings are attracted to one another.*

#### 3.0 Andrew Newton ... Hypnosis

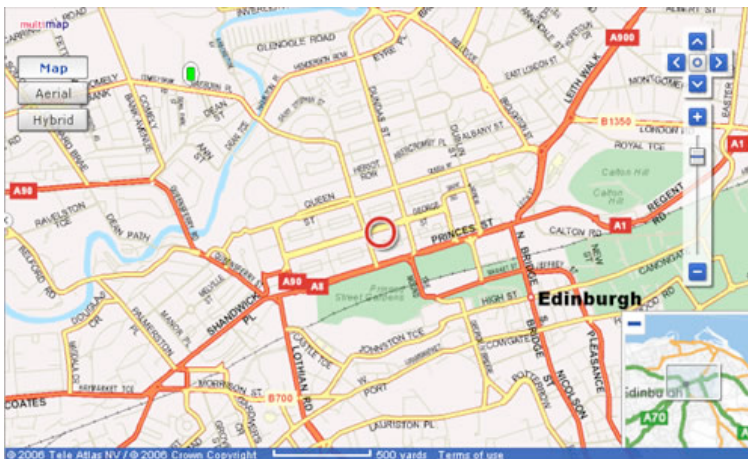
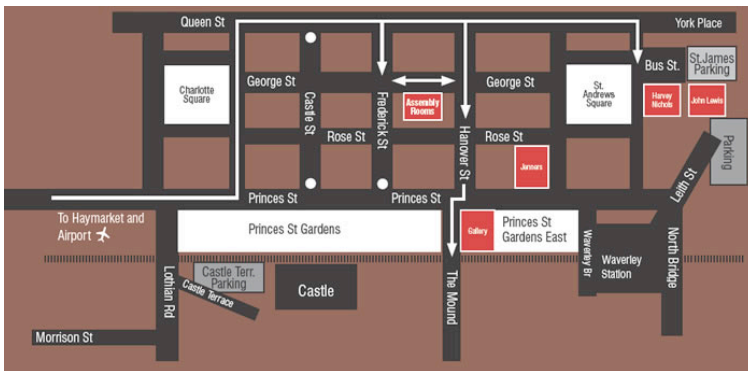
*Andrew will talk about the development of hypnosis and explain in layman's terms how and why it works! The lecture will end with a demonstration of hypnosis using volunteers from the audience.*

*Andrew's lectures are always both fascinating and funny and have proved to be immensely popular with professional and student audiences alike!*

#### 4.30 Day ends

**No notes will be provided for this conference.**

# Edinburgh Assembly Rooms



## Location and Transport

**CAR PARKING** There are NCP Car Parks situated at Castle Terrace (West End) and St James Centre (East End), both have height restrictions of 6ft 10in or 2 metres. A map of central car parks can be found on the link [www.edinburgh.gov.uk](http://www.edinburgh.gov.uk)

**BUSES** There are a few buses, which run along George Street however the main services operate via Princes Street, Frederick Street and Hanover Street. For information about routes and times please contact [www.lothianbuses.co.uk](http://www.lothianbuses.co.uk) or 0131 555 6363

**RAIL** The main station in Edinburgh is Edinburgh Waverley Station situated at the East End of Princes Street within 5 - 10 minutes walking distance.

## Colston Hall, Bristol



**Foot** The Colston Hall is on Colston Street, off the city centre promenade. We are ten minutes walk from the Broadmead shopping area, situated behind Colston Tower.

Train Temple Meads, the nearest station, is about 1 mile from Colston Hall. Buses 8 and 9 run directly to the city centre promenade. For further info about train times please call National Rail Enquiries: 08457 48 59 50 (24 hrs)

**Bus** Most buses to the city centre stop at the promenade, where we recommend you alight for Colston Hall. We are situated on Colston Street, behind Colston Tower. For further bus enquiries please call First Cityline: 0845 602 0156 (8am - 8pm)

**Car** Via M5: Exit junction 18, follow A4 (Portway) to the centre. At the promenade (St Augustine's Parade) turn left into Colston Street.

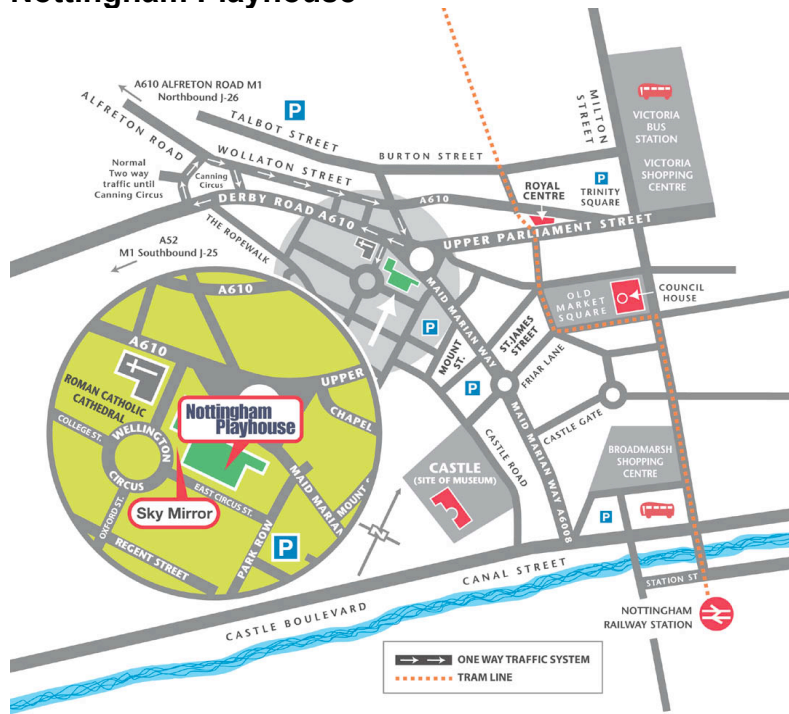
Via M4: Exit junction 19 (M32). Follow signs to Clifton. For dropping-off / picking-up turn into Colston Street, which is the first left after the Bristol Royal Infirmary (BRI).

n.b. Please bear in mind that Colston Street is only accessible in one direction from the city centre promenade - when driving either from Park Street/Anchor Road toward the M32.

**Parking** We recommend parking in the Trenchard Street car park, situated behind Colston Hall. Enter via Trenchard or Lodge Street. Parking, between 6pm and midnight costs £1.60 (£2.60 for over 2 hours on Saturdays), payable at the pay-machines either on entrance (before leaving the car park for Colston Hall) or exit. You may find it easier to pay for your ticket before the show to avoid any queuing on the way home. Easiest access to Colston Hall can be found on floor one of the car park.

n.b. Trenchard Street car park serves a number of city venues and can be extremely busy. Further parking is available on Frog Lane, at the end of Frogmore Street.

# Nottingham Playhouse



Nottingham Playhouse is in Nottingham City Centre, clearly signposted from Old Market Square.

**Bus:** 5 minutes walk from Old Market Square, 10 minutes walk from Victoria and Broadmarsh Bus Stations. Call Traveline on 0870 608 2 608 (7am-9pm Mon-Sun) for bus timetable information.

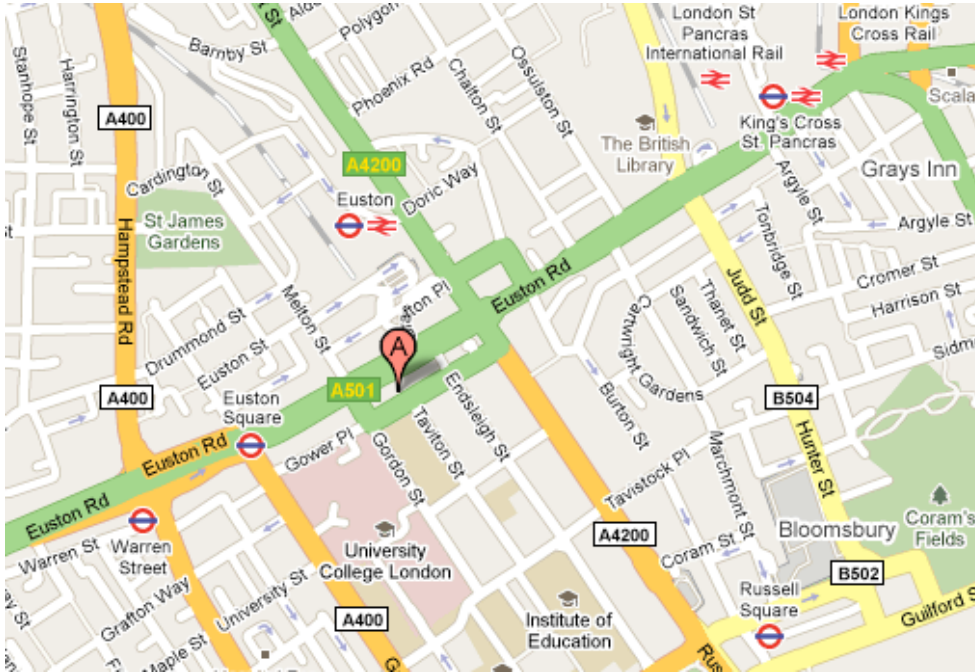
**Tram:** 5 minutes walk from stops at either Old Market Square or Royal Centre.

**Rail:** 10 minutes walk from Nottingham Station. Call National Rail Enquiries on 08457 484950 (24hrs) for train timetable information.

**Car:** Use M1 junction 25 (south) or 26 (north) Parking: Free on-street parking after 6pm. We have negotiated reduced rate parking for those using the NCP car parks on Mount Street and St James' Street. Ask a member of the Front of House team to validate your ticket.

## Friends House

173-177 Euston Road London NW1 2BJ  
Tel: 020 7663 1000 for reception.



Friends House couldn't be easier to reach:

**By rail:** From its position opposite Euston's rail and tube stations, it is a ten minute walk from King's Cross Station and St Pancras International Terminus. All major rail terminals are easily reached by tube.

**By tube:** The nearest tube stations are Euston and Euston Square, which are on the Northern, Victoria, Metropolitan, Circle and Hammersmith & City lines.

**By bus:** Numbers 10, 18, 30, 73, 205 and 390 pass the door whilst 59, 68, 91, 168, and 253 stop nearby.

**By car:** Friends House is within a meter parking zone. Charges must be paid Monday to Friday 08.30 - 18.30 and Saturday 09.00 - 13.30. There are alternative, longer-term parking facilities under Euston Station. Please note that Friends House is within the congestion charge zone. For details of how to pay please go to <http://www.cclondon.com/>

# Colston Hall Risk Assessment

Colston Hall has a premises licence, this is a document granted by the council which allows us to put on performance, sell alcohol etc. Part of this licence is conditional on us maintaining certain standards with regard to audience safety etc.

Most people will enter Colston Hall by the entrance in Colston Street this is up a few steps, through a portico and then via 1 of 3 glass doors. As you enter there are 2 more steps to get you up to box office and cloakroom level.

To get access to the stalls you need to climb some 30 stairs, there are two sets of stairs, one on the Right hand side adjacent to the ladies cloaks and 1 on the Left hand side adjacent to the gents cloaks. Each of these staircases is 4m wide and has a hand rail up the centre as well as along the walls.

Access to the stalls is easier from the left hand staircase while access to the balcony is easier via the right hand staircase. You may gain access to the bar from either staircase.

You will then enter the main hall as directed through the doors marked Front Stalls or Rear stalls or you will then need to climb another 2 flights of stairs to gain access to the balcony.

There are usually seats in all areas in the auditorium although for some events the front stalls seats are removed for standing patrons.

Where you have reserved seats (those with row and seat numbers on them) you will see the row letter either on the end of the rows or painted on the floor. The letters are in alphabetical order from the front. Seats are numbered from the right hand side of the auditorium (if you are looking at the stage). If you cannot find your seat please contact a member of staff.

If you have unreserved seats you will need to find somewhere to sit anywhere in the auditorium, Please make sure you do not leave any gaps as this can lead to problems if we have a sold out show.

## **For schools with primary age children on daytime shows**

If there is likely to be a large number of coaches picking up children during a daytime performance Colston Hall staff will assist you in letting the schools know when the coach arrives. This is done from the stage so please sit tight until your school is called. This alleviates crushing and potential injury on the way down the stairs and allows teachers to keep children together. **This is not the case for evening performances and organisers must inform parents where to find their children at the end of a performance**

For other audience members, exiting is the reverse of entering

If a child is ill please let our staff know so that we can clear up any mess and assist where we can

In the event of an emergency please follow the instructions of our staff who will assist you in your safe egress from the venue.

